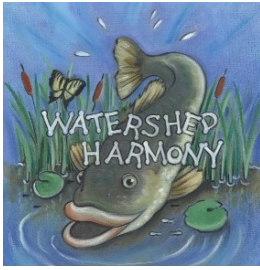


# The Land Trust for the Mississippi Coastal Plain

presents



## WATERSHED HARMONY

**A Musical Puppet Play  
by Bayou Town Productions**

**WATERSHED HARMONY** is a musical puppet performance aligning with the Mississippi Curriculum Framework and National Science Standards. Audiences of all ages will delight as Bobby Bass and his River Town friends share their experiences in environmental stewardship through this toe-tapping musical. Performances are enjoyed not only by school groups, but also by adults attending teacher workshops, civic clubs, and conferences. This program serves to inform and enlist the help of citizens in an on-going effort to promote water quality in their communities. Everyone is needed to promote Watershed Harmony!



River Town suddenly becomes a hustling and bustling community when a large manufacturing company builds a plant next to Clear Bottom River. Practically overnight, this progressive town begins building more schools, homes, roads, and stores. Citizens are very happy that their town is thriving and there are jobs for nearly everyone. Because things happen so fast in River Town, the citizens don't consider a plan to protect their natural resources. One day, a terrific rain storm comes and washes large amounts of soil, litter, and pollutants into the river. Fish and other aquatic life suffer, and Bobby Bass vows to help his river friends. When the River Town citizens discover the polluted runoff, they seek help, and develop a plan to use Best Management Practices (BMPs) to keep pollution out of the river.

The "Concerned Citizens" organize a Water Quality Steward action group. They pitch in and clean up the river, replanting trees and shrubs along the river's edge. Over time, the river regains its health, and the fish and other aquatic animals return to the river.

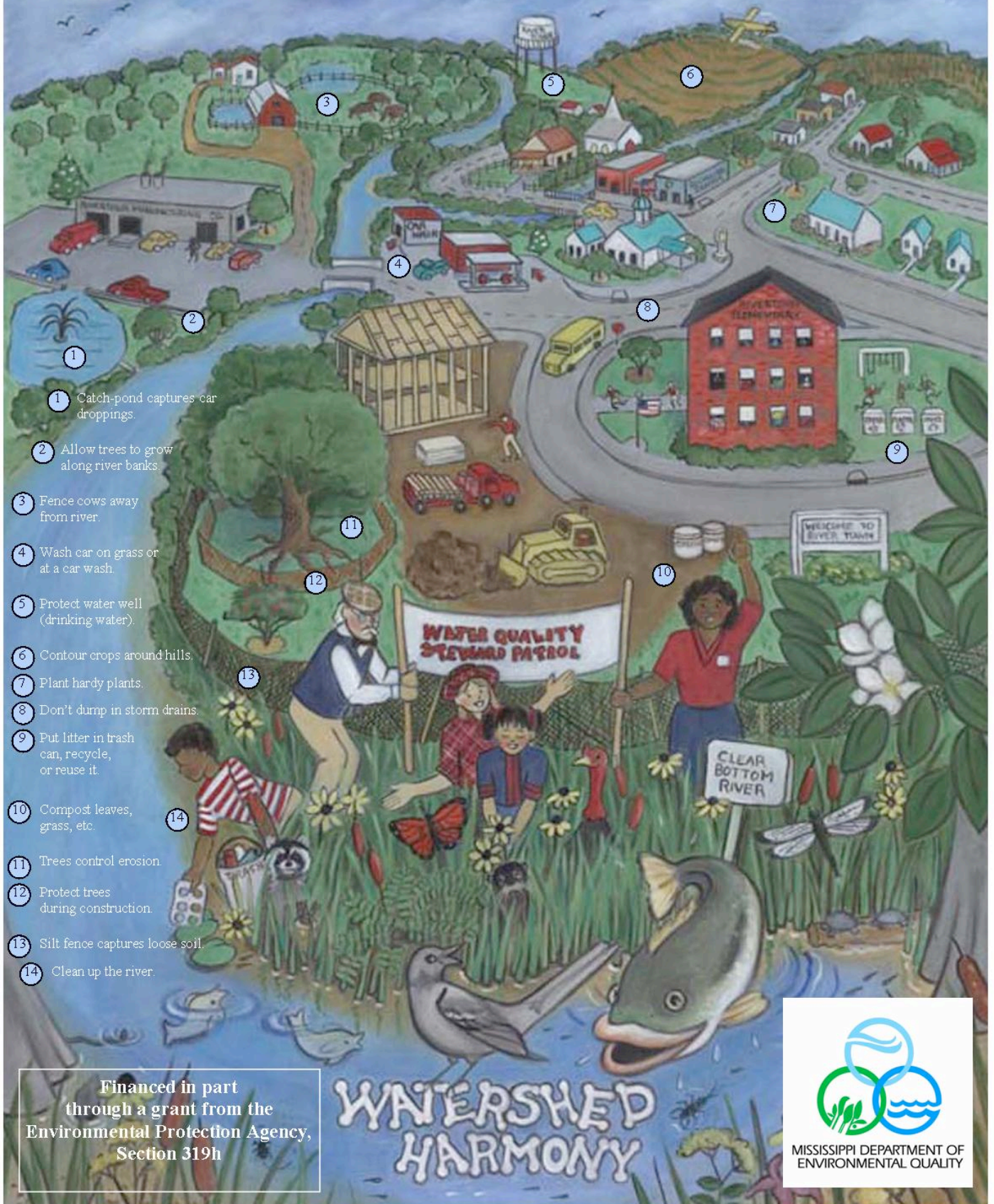
Please join us on this musical adventure which demonstrates that its' everyone's responsibility to keep our water clean! To schedule the puppet show at your school, contact the Land Trust for the Mississippi Coastal Plain at 228-435-9191.



*Watershed Harmony is financed by a grant from the United States Environmental Protection Agency to the Mississippi Department of Environmental Quality, Watershed Management Branch under the provisions of Section 319 of the Clean Water Act.*



# BEST MANAGEMENT PRACTICES (BMPs)



- 1 Catch-pond captures car droppings.
- 2 Allow trees to grow along river banks.
- 3 Fence cows away from river.
- 4 Wash car on grass or at a car wash.
- 5 Protect water well (drinking water).
- 6 Contour crops around hills.
- 7 Plant hardy plants.
- 8 Don't dump in storm drains.
- 9 Put litter in trash can, recycle, or reuse it.
- 10 Compost leaves, grass, etc.
- 11 Trees control erosion.
- 12 Protect trees during construction.
- 13 Silt fence captures loose soil.
- 14 Clean up the river.

Financed in part through a grant from the Environmental Protection Agency, Section 319h

WATERSHED HARMONY



# WATERSHED HARMONY Environmental Puppet Theater

Presented by BAYOU TOWN Productions 3166 Road 310, Kiln, MS 39556 Phone: (228) 586-0479

## The Mississippi Department of Environmental Quality Performance Confirmation Form

Please clearly print or type information in its entirety.  
Performance requirements are listed on the Watershed Harmony information sheet.

Event Name: \_\_\_\_\_

Event Purpose: \_\_\_\_\_

Host/Hosting Group: \_\_\_\_\_ / Land Trust for the Mississippi Coastal Plain

Watershed: \_\_\_\_\_

Funding Source: MDEQ \_\_\_\_\_

Event Location: \_\_\_\_\_

Event Date: \_\_\_\_\_ Event Times: \_\_\_\_\_

Number of Teachers: \_\_\_\_\_ (MDEQ will provide 1 activity book per teacher.)

Students Age/Grade: \_\_\_\_\_ Number of Students: \_\_\_\_\_

What counties will the students represent? \_\_\_\_\_

### Contact Person Information

A host or hostess must accompany performers from arrival to departure.

Contact Name: \_\_\_\_\_

Contact Address: \_\_\_\_\_

Work Phone Number: \_\_\_\_\_ Cell Phone Number: \_\_\_\_\_

E-mail Address: \_\_\_\_\_

Alternate Contact Person: \_\_\_\_\_

Alt. Contact Work Number: \_\_\_\_\_ Alt. Contact Cell Number: \_\_\_\_\_

Host/Hostess to Performers: \_\_\_\_\_ / Laura Bowie, Land Trust

Directions to Event/Special Instructions: \_\_\_\_\_

\_\_\_\_\_  
\_\_\_\_\_

**Please fax this form to the Land Trust at 228-435-5749 or email to judyltmcp@aol.com!**

# WATERSHED HARMONY Environmental Puppet Theater

Presented by BAYOU TOWN Productions 3166 Road 310, Kiln, MS 39556 Phone: (228) 586-0479

## Watershed Information

Please clearly print or type the *specific* information requested about your watershed so that we can tailor your performance to the needs of your community. If possible, please include a map of contributing water bodies. (This may be hand drawn.) The performance(s) will be videotaped and given to your watershed team leader for distribution.

What are the contributing water bodies to this watershed? \_\_\_\_\_

\_\_\_\_\_

\_\_\_\_\_

List the major factors that are negatively impacting this watershed: \_\_\_\_\_

\_\_\_\_\_

\_\_\_\_\_

\_\_\_\_\_

\_\_\_\_\_

List efforts being made to positively affect this watershed: \_\_\_\_\_

\_\_\_\_\_

\_\_\_\_\_

\_\_\_\_\_

\_\_\_\_\_

Pertaining to this watershed, what specific behavioral changes would you like to impart to the students? \_\_\_\_\_

\_\_\_\_\_

\_\_\_\_\_

\_\_\_\_\_

**Please fax this form to the Land Trust at 228-435-5749 or email to [judyltmcp@aol.com](mailto:judyltmcp@aol.com)!**